

# Air Carbon Arc Gouging Torch GD-K4000

## Technical Specifications:

- 15° Angle Head with 2 meter cable.
- 360° Swivel cable end.
- Heat resistant poly-wood material torch body.
- Electrode size : Ø4 ~ 12mm.
- Working current : 800 Amps.
- Air pressure : 0.5 ~ 0.6 Mpa.
- Weight : 3KG.

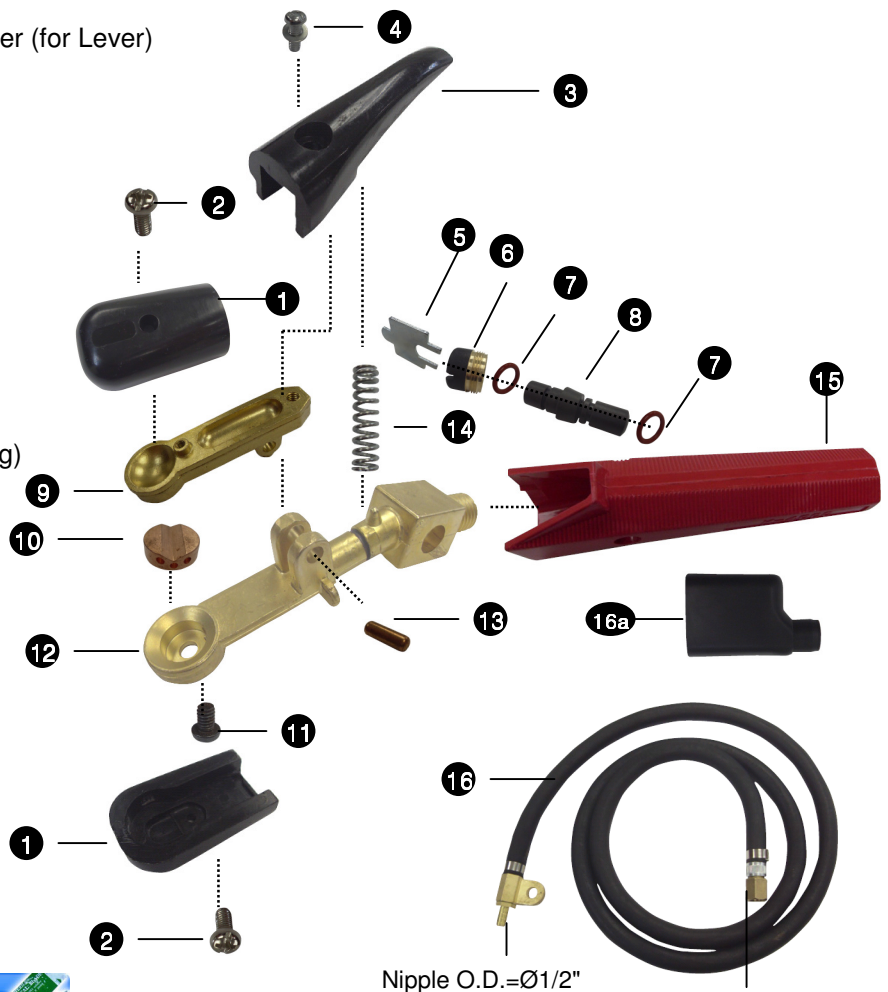


## Operating Instructions:

- Remove the Rubber Boot from connection head, connect the compressed air and power to the air-cable joint properly, then put on the Rubber Boot for insulation and safety;
- Grip a carbon electrode; push the Switch Pin to adjust the compressed air before start gouging.

## Spare Parts:

1. Upper Insulation Cover
1. Lower Insulation Cover
2. Screw M4 X 8 (-36) (for Insulation Cover)
3. Lever
4. Screw M6 X 15 (-25) with Washer (for Lever)
5. Wrench
6. Bering Nut
7. O-Ring Ø13 X 2.4
8. Valve Tube
9. Upper Jaw
10. Torch Head
11. Screw M4 X 7 (-36) (for Head)
12. Torch Body
13. Switch Pin
14. Spring
15. Handle
16. 2 Meter Cable with End Plug
- 16a. Rubber Boot (for Cable End Plug)



Nipple O.D.=Ø1/2"

Nut Thread=M18X2.5 coarse



### GRACEDUTY COMPANY LIMITED

Room 1102 – 1104, 11/F., CRE Centre,  
889 Cheung Sha Wan Road, Kowloon, Hong Kong, China  
Tel: (852) 2420-5808 (6 Lines) Fax: (852) 2420-5507  
E-mail: welding@graceduty.com.hk http://www.graceduty.com.hk